

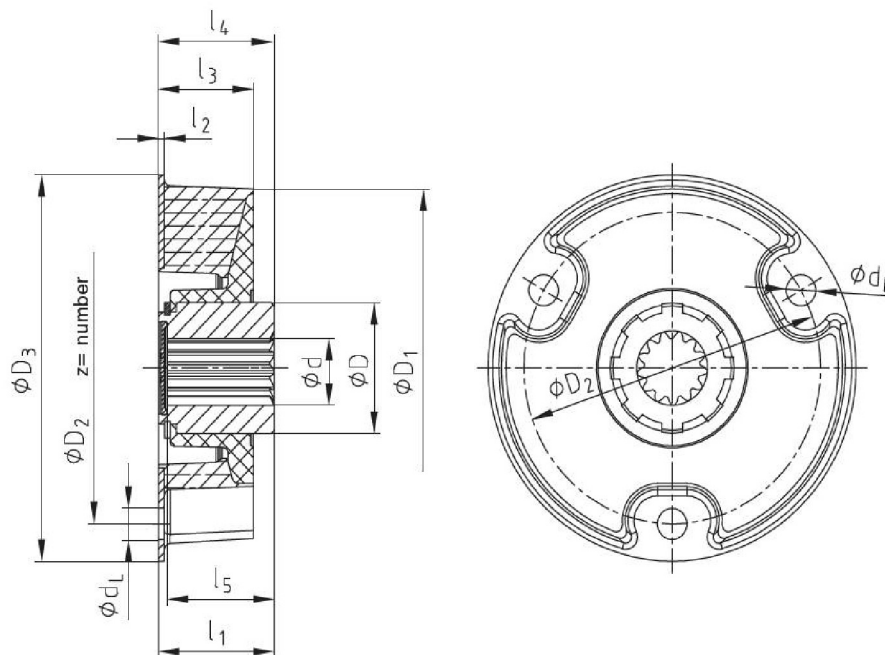
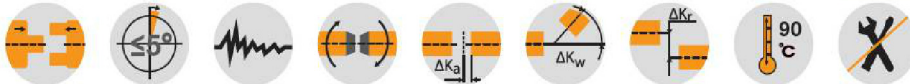
# MONOLASTIC®

## One-piece, flexible flange couplings

Type with 3 holes (EP 0853203/U.S. Patent 6,117,017)



For legend of pictogram please refer to flapper on the cover



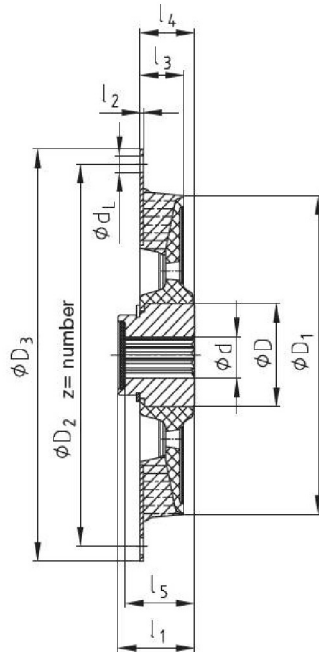
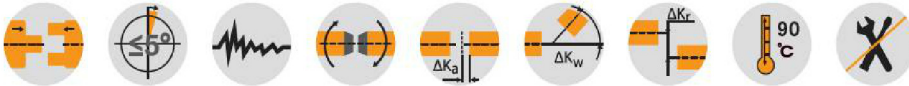
MONOLASTIC®																
Size	Elastomer hardness [Shore A]	Torque [Nm]			Dimensions [mm]											
		T <sub>KN</sub>	T <sub>K max.</sub>	T <sub>KW</sub>	d	D	D <sub>1</sub>	D <sub>2</sub>	z	d <sub>L</sub>	D <sub>3</sub>	l <sub>1</sub>	l <sub>2</sub>	l <sub>3</sub>	l <sub>4</sub>	l <sub>5</sub>
22	65	40	100	20	20	34	93	80	3	8,10	100	33	1,5	32	34	30
	70	100	300	50	25	42	115	100	3	10,10	124	40	2	32	40	38
32	65	160	400	80	32	50	140	125	3	12,10	150	42	2	42	43	38
	70	225	675	112	32	50	140	125	3	12,10	150	42	2	42	43	38
50-140	70	260	650	130	32	50	167	140	3	14,10	175	46	3	35	46	43
50-165	70	300	750	150	32	50	175	165	3	16,15	200	46	3	35	46	43
50-170	70	300	750	150	32	50	175	170	3	16,15	200	46	3	35	46	43
60-165	70	400	1000	200	48	68	191	165	3	16,15	205	50	3	40	55	46

Technical data										
Size	Elastomer hardness [Shore A]	C <sub>dyn.</sub> with 60 °C [Nm/rad]	Perm. damping power with 60 °C PKW [W]	Max. displacement with 2200 rpm ΔKr [mm]	Perm. angular displacement with 2200 rpm ΔKw [°]	Radial spring stiffness Cr [N/mm]	Mass moment of inertia [kgm <sup>2</sup> ]		Max. perm. operating speed n <sub>max.</sub> [rpm]	
							J <sub>A</sub>	J <sub>L</sub>		
22	65	600	10	0,6		200	0,00017	0,00010	6000	
28	65	900	15	0,6		300	0,00054	0,00033	6000	
	70	1300		0,5		400				
32	65	1800	25	0,6		400	0,00120	0,00081	6000	
	70	2400		0,5	1	500				
50-140	70	4200	35	0,5		1365	0,00210	0,00130	6000	
50-165		5600	40	0,5		1550	0,00250	0,00130	6000	
50-170		7800	40	0,5		1500	0,00599	0,00358	6000	
60-165										

# MONOLASTIC®

## One-piece, flexible flange couplings

Type SAE (EP 0853203/U.S. Patent 6,117,017)



Flange dimensions acc. to SAE J 620 [mm]				
Size	D <sub>3</sub>	D <sub>2</sub>	z	d <sub>L</sub>
6 1/2"	215,9	200,02	6	9
7 1/2"	241,3	222,25	8	9
8"	263,52	244,47	6	11
10"	314,32	295,27	8	11
11 1/2"	352,42	333,37	8	11

MONOLASTIC®																	
Size	Elastomer hardness [Shore A]	Torque [Nm]			Dimensions [mm]								MONOLASTIC® flanges according to SAE				
		T <sub>KN</sub>	T <sub>K max.</sub>	T <sub>KW</sub>	d	D	D <sub>1</sub>	l <sub>1</sub>	l <sub>2</sub>	l <sub>3</sub>	l <sub>4</sub>	l <sub>5</sub>	6 1/2"	7 1/2"	8"	10"	11 1/2"
30	65	160	400	80	25	42	120	39	2	21	30	36	X	X			
	70	200	500	100													
50	65	300	750	150	32	50	167	42	2	24	30	38	X	X	X	X	
	70	400	1000	200													
G50	70	550	1375	275	32	50	178	42	2	24	36	38		X	X	X	
65	65	600	1500	300	48	68	200	45	3	32	45	42				X	X
	70	800	2000	400													
75	65	1200	3000	600	60	90	265	58	3	35	50	54				X	X
	70	1500	3750	750													

Technical data										
Size	Elastomer hardness [Shore A]	Cdyn.with 60 °C [Nm/rad]	Perm. damping power with 60 °C PKW [W]	Max. displacement with 2200 rpm ΔKr [mm]	Perm. angular displacement with 2200 rpm ΔKw [°]	Radial spring stiffness Cr [N/mm]	Mass moment of inertia [kgm²]			Max. permissible operating speed nmax. [rpm]
							J <sub>A</sub>	J <sub>L</sub>		
30	65	3750	25	0,5	1	1150	6,5"	0,0038	0,00030	6000
	70	4875					7,5"	0,0057		
50	65	9000	35	0,5	1	1300	8"	0,0078	0,00120	6000
	70	12000					10"	0,0153		
G50	70	17500	40	0,5	1	1910	7 1/2"	0,0060	0,00120	6000
							8"	0,0080		
							10"	0,0162		
65	65	14000	45	0,5	1	1900	10"	0,0238	0,00380	6000
	70	18000					11,5"	0,0368		
75	65	34000	80	0,5	1	1850	10"	0,0272	0,01450	6000
	70	42000					11,5"	0,0402		